


Project number:

20191209\_LV\_B

"\*" Indicates critical or assembly dimensions  
Decorative surface 

THE MASTER SOURCE OF INFORMATION FOR THIS DRAWING IS A PD COMPUTER DATABASE. CHANGES ARE NOT PERMITTED WITHOUT PRIOR CONSENT OF THE ENGINEERING CAD AREA.

Test standard:

Unspec. Wall Thickness:	-
Unspec. Corners:	0,5
Unmarked radiuses:	0,5
Unit of measure:	mm

General tolerance (high grade) [mm]

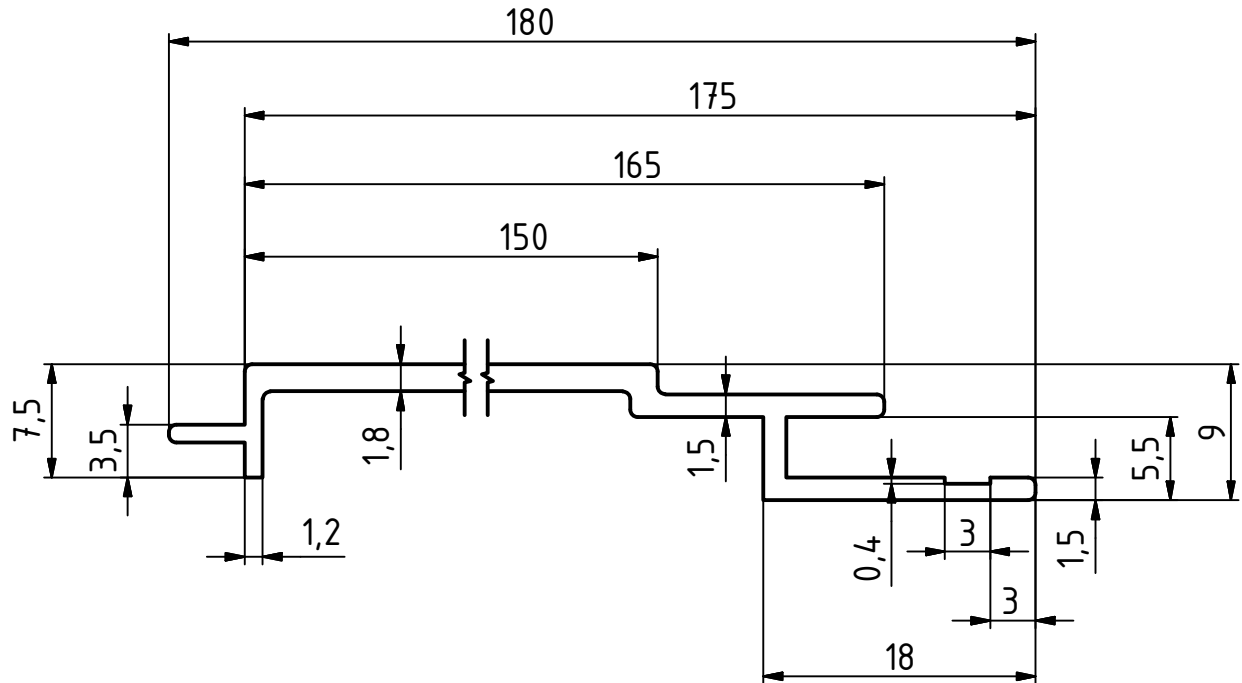
size	from 0,05 to 3	from 3 to 10	from 10 to 15	from 15 to 30	from 30 to 45	from 45 to 60	from 60 to 90	from 90 to 120	from 120 to 150	from 150 to 200	from 200 to 250
tolerance	± 0,13	± 0,15	± 0,17	± 0,21	± 0,26	± 0,31	± 0,52	± 0,61	± 0,86	± 1,12	± 1,37

Model 1:2

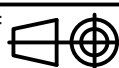



Radiuses:

r = -  
v = -  
x = -  
z = -



This drawing is property of AXELGROUP s.r.o. and may not without our written permission be copied, given to a third part or be used for other unauthorised purposes.

Material:	6063-T5	Surface treatment:	MF
Weight:	- kg	Density of material:	- g/cm <sup>3</sup>
Estimated weight:	0,918 kg/m	Date:	10.12.2019
Cross-section:	339,878 mm <sup>2</sup>	Screening:	
Designer: Rosinský	Address:	Assembly number:	Size: A4
Control: Prachař	Warehouse:	20191209_LV_B 01.000	Scale: 2:1
	Mobil:	Name:	FP-7
	Tel.:	Drawing number:	20191209_LV_B 01.000
	Email:		